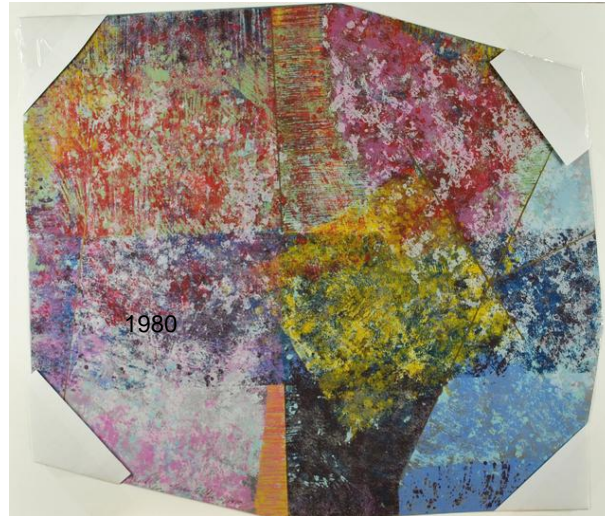


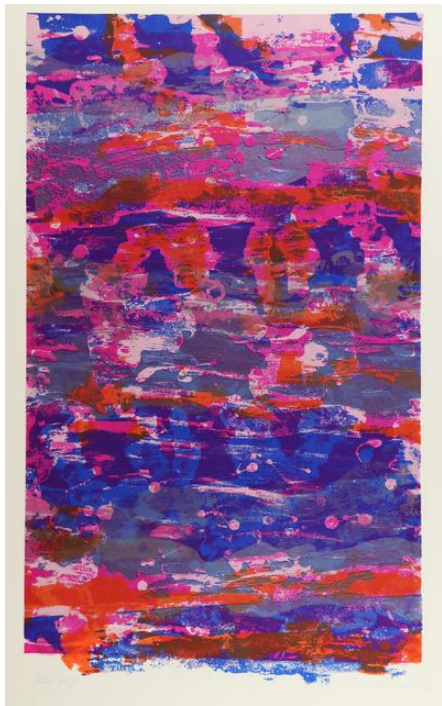
# THE PRINTS OF SAM GILLIAM

The Michael C. Butler Collection  
Exhibition List of Works - 34 Works In Total



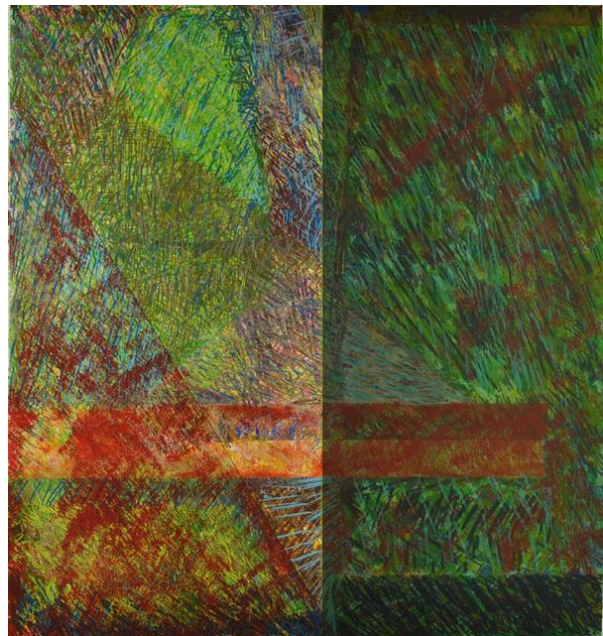
**SAM GILLIAM**

*Much*  
*Lower Left W/ Title*  
Silkscreen  
23 x 35 in.  
1980



*Dance (Purple)*  
Serigraph  
42 x 28 in.

1972



**SAM GILLIAM**

**SAM GILLIAM**  
*GDS*  
Serigraph  
32 1/4 x 30 1/8 in.

1978



**SAM GILLIAM**

*After Smoke*

Serigraph

32 x 40 in.

1985



**SAM GILLIAM**

*Prelude to New Columbia*

*Lower Right*

Silkscreen

37 x 29 in.

1994



**SAM GILLIAM**

*For Xavier*

Serigraph

32 1/5 x 40 1/8 in.

1990



**SAM GILLIAM**

*Think Tank*

Serigraph

40 x 44 in.

1996



**SAM GILLIAM**

*Providence 6:36*

Serigraph

29 x 44 in.

1999



**SAM GILLIAM**

*Journey Home*

Serigraph

31 x 50 in.

2002



**SAM GILLIAM**

*ARS*

*Lower Right*

Silkscreen

29 x 20 in.

2003



**SAM GILLIAM**

*Soaring*

*Lower Right*

Silkscreen

28 7/8 x 20 1/8 in.

2005



**SAM GILLIAM**

*R and B*

*Lower Right*

Silkscreen

25 x 18 1/2 in.

2005



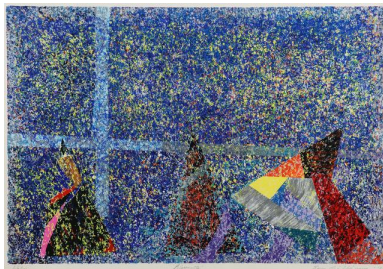
**SAM GILLIAM**

*Destiny*

Serigraph

30 x 21 in.

2008



**SAM GILLIAM**

*Bluesette*

Serigraph

18 1/2 x 25 in.

1999



**SAM GILLIAM**

*Marion Barry*

*LR, Titled, Numbered and Dated*

Silkscreen

16 x 34 in.

1978



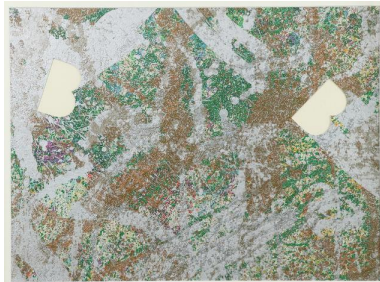
**SAM GILLIAM**

*Pantheon*

Silkscreen

38 x 28 in.

1984



**SAM GILLIAM**

*"BB"*

Monoprint

16 x 20 in.

1999



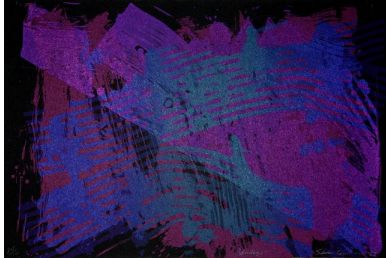
**SAM GILLIAM**

*In Celebration*

Serigraph On Paper

32 x 40 1/8 in.

1987



**SAM GILLIAM**

*Indigo*

Lithograph

15 x 22 in.

1993



**SAM GILLIAM**

*Museum Moment*

Serigraph

32 x 40 in.

2009



**SAM GILLIAM**

*New Bridges*

Silkscreen

30 x 23 in.

Framed

35 x 27 cm

2004



**SAM GILLIAM**

*Niagara On the Potomac*

*Workshop Inc, Stamp Left Bottom--Lou Stovall printmaker*

Silkscreen

23 x 40 in.

1995



**SAM GILLIAM**

*Running Rouge*

Serigraph

30 1/4 x 22 in.

2003



**SAM GILLIAM**

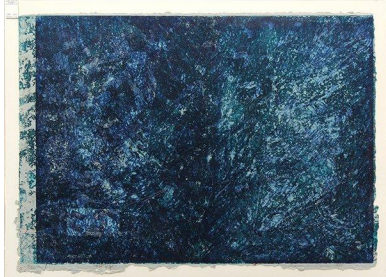
*To Enter The Forest*

Serigraph

22 x 30 in.

1981





**SAM GILLIAM**

*Trail's End*

Silkscreen

24 x 34 in.

1980



**SAM GILLIAM**

*Untitled Original 1--Purple Antelope Squeeze Space II  
Lower Right*

Mixed Media /Assemblage

39 x 38 in.

1987



**SAM GILLIAM**

*Untitled Original 2--Purple Antelope Squeeze Space II  
Lower Left (Vertical)*

Mixed Media /Assemblage

39 x 38 in.

1987



**SAM GILLIAM**

*Flowers #2*

Collage, woodblock printing, painting, encaustic on handmade paper, marble constructions in wood frames, Signed and dated on verso, edition 2/20. From the Tulip Series, a joint venture between enterprise and off-jones prints, Sam Gilliam Bill Weege.

36 x 36 x 6 in.

1989



**SAM GILLIAM**

*T Shirt (Equal Opportunity Is The Law)*

*Silver All Writing. (Needs A Flashlight to see Clearly)*

Silkscreen

29 1/4 x 21 1/2 in.

1973



**SAM GILLIAM**

*For 200*

*Lower Right; Printer's Chopmark--Workshop, lower left with edition A/P*

Silkscreen

19 1/2 x 21 1/2 in.

1976



**SAM GILLIAM**

*Dance 1972*  
*Lower Right*

Silkscreen  
33 1/2 x 19 in.  
1972



**SAM GILLIAM**

*Untitled (Liberation--Red, Black and Green)*  
*Lower Right*

Silkscreen  
15 x 20 in.  
1988



**SAM GILLIAM**

*Lightning Bolt*  
*Lower Edge--Signed and Dated (Lower Right), Titled (Bottom Center), Numbered (Lower Left)*

Collagraph Screen Print with Blue Handmade Paper  
25 x 25 in.  
1992



**SAM GILLIAM**

*Wissahickon*

*Lower Right*

Silkscreen

Sheet Size

22 x 30 in.

1975